

Sail the Wight

A sail round the Isle of Wight to raise funds for Earl Mountbatten Hospice

Saturday 14th June 2008

Hosted by East Cowes Sailing Club

Entry Form

Cruise Round the Island for EM Hospice	
East Cowes Sailing Club RTI Race	
Westerly Owners RTI Race	
18 Nautical Mile Race	
<i>Please state which class you are entering you can enter more than one class</i>	£5 Entry Fee required (pennant supplied) Cheques payable to East Cowes Sailing Club
Skipper Name	
Address	
Town	
County	
Post Code	
Country	
E-mail address (PRINT)	
Telephone number	
Mobile Number	
Yacht name	
Type	
Keel	
Rig	Fin/ Bilge
Propeller	Sloop/ Ketch
Sail number	2 3 Folding Outboard
Portsmouth Yardstick No (if known)	
Sail number	
Mobile phone number that will be on boat	
Crew List (You must list before 2000 hours on 13 th June 2008)	

Each Crew member is to be sponsored with the money donated to The Earl Mountbatten Hospice, Newport. All funds raised to be given to Paul Walker, 9 Old Road, East Cowes, PO32 6AL ☎ 01983 293087 email karen@walkervectis.fsnet.co.uk by 16th July 2007

Skippers are advised to ensure that CG66 (Coastguard voluntary Registration form) is up to date. It can be filled in online at www.msga.gov.uk.

IMPORTANT. This event is run under the terms of the Constitution and Rules of the Westerly Owners Association. You will find these in the WOA Year Book.

Sail the Wight

A sail round the Isle of Wight to raise funds for Earl Mountbatten Hospice

Saturday 14th June 2008

Hosted by East Cowes Sailing Club

THE COURSES

Course A

ECSC line (traversed going west), Needles Light House to port, St Catherine's Point to port, Bembridge Ledge Buoy to port, ECSC Finish Line. Yachts must not go north of Horse Sands Fort.

Course sign-Letter 'A' on board.

Course B

ECSC line (traversed going west), 50°46'084N 01°17'111W
Charles Stanley Stockbrokers to starboard, 50°42'065N 01°29'70W
Moore & Blatch to starboard, 50°44'606N 01°29'518W
Peters & May to starboard, 50°46'127N 01°22'193W
West Ryde Middle to starboard, 50°46'479N 01°15'797W
ECSC Finish line.

Course Sign-Letter 'B' on board

Start

The event will be started as follows:

Racing Start Time	Cruising Start Time	Big Boat Start Time
Warning 06:45	06:50	06:55
Prep 06:50	06:55	07:00
Start 06:55	07:00	07:05

All sound signals, light signals and course information will be made/exhibited from the shore end of the start line.

The Warning Signal for the start will be a sound signal and the displaying of a yellow rectangle displayed 10 minutes before the start.

The Preparatory Signal 5 minutes before the start will be indicated by a sound signal immediately followed by the display of a green circle for ECSC/WOA and an orange triangle for HSTW. An orange course letter on a black background will indicate the course to be sailed.

A light signal may be made at the same time as the sound signal.

This in effect gives a 10-5-Go sequence.

The start line will be the transit of 2 dayglow orange poles located outside the Green Beach Hut with White Apex located about 200 meters southwest of Castle Point on The Esplanade, East Cowes with an outer distance mark of CHC. CHC may or may not be on the start line. Should conditions dictate an ECSC Launch displaying a blue flag and positioned approximately north of CHC may be used as the outer limit for the start line. CHC is also known as 'Mark off Shrape'

THE FINISH

The finish line will be the transit of 2 dayglow orange poles located outside the Green Beach Hut with White Apex located about 200 meters southwest of Castle Point on The Esplanade, East Cowes with an outer distance mark of 'Mark off Shrape' also know as racing mark CHC. CHC may or may not be on the finish line.

There will be an 18 nautical mile race in the Solent held on the same day for boats 20ft and under or any others who prefer a shorter race.

Course C

ECSC line (traversed going west), 50°46'00N 01°17'00W

Gurnard to starboard, 50°46'22N 01°18'90W

Gurnard Ledge to starboard, 50°45'50N 01°20'60W

Quinnell to starboard, 50°47'15N 01°19'90W

South Bramble to starboard, 50°47'00N 01°17'70W

West Ryde Middle to starboard, 50°46'50N 01°15'80W

East Bramble to starboard, 50°47'30N 01°13'70W

North Sturbridge to starboard, 50°45'35N 01°08'30W

Gales HSB to starboard, 50°46'20N 01°16'60W

ECSC Finish line.

TIME LIMITS

Time limit is 1900 on 14th June 2008

SAFETY

The Associated British Ports Southampton Notice to Mariners No 33 of 2003 Port of Southampton- Precautionary Area (Thorn Channel) listed as Appendix 1 forms part of the Sailing Instructions. You are advised to monitor VHF Channel 12 for shipping movements.

An engine shall be used when appropriate to avoid risk of collision with another vessel that is under way or in grave emergency.

A boat that retires from the event shall notify the yacht Brassed Off on VHF Channel 77 soon as possible. Mobile phones should be used to call the Chief Race Officer Shore Watch Mr Dave Hedgecox 07989690328 to notify retirement if contact **cannot** be made with Brassed Off 07919400532.

The minimum size of vessel for this event is 20 foot. The person in charge of the vessel is responsible for ensuring that the appropriate safety equipment suitable for the vessel is carried.

INSURANCE

Each participating boat shall be insured with valid third-party liability insurance with a minimum cover of £2,000,000 per event or the equivalent.

TIDES

Cowes BST

HW 08.59 3.9

LW 14.30 1.7

HW 21.26 4.1

DISCLAIMER OF LIABILITY

Participants take part in the event entirely at their own risk. The organizing authority will not accept any liability for material damage or personal injury or death sustained in conjunction with or prior to, during, or after the regatta.

NOTICE TO MARINERS

No 33 of 2003

Port of Southampton – Precautionary Area (Thorn Channel)

- 1 NOTICE IS HEREBY GIVEN** that all vessels navigating within the Port of Southampton shall ensure that a vessel greater than 220m shall be given a 'clear channel' between Hook Buoy and the Prince Consort Buoy (Precautionary Area). The term 'clear channel' is defined as:

'A clear channel vessel' is one which requires a clear and unimpeded passage ahead when transiting the Precautionary Area'.

Vessels may enter the Precautionary Area (see chartlet) maintaining a safe distance astern of a 'clear channel' vessel.

- 2 Two vessels each having a length greater than 180 metres shall not pass or overtake each other between Hook Buoy and the Prince Consort Buoy.**

3 Moving Prohibited Zone (MPZ)

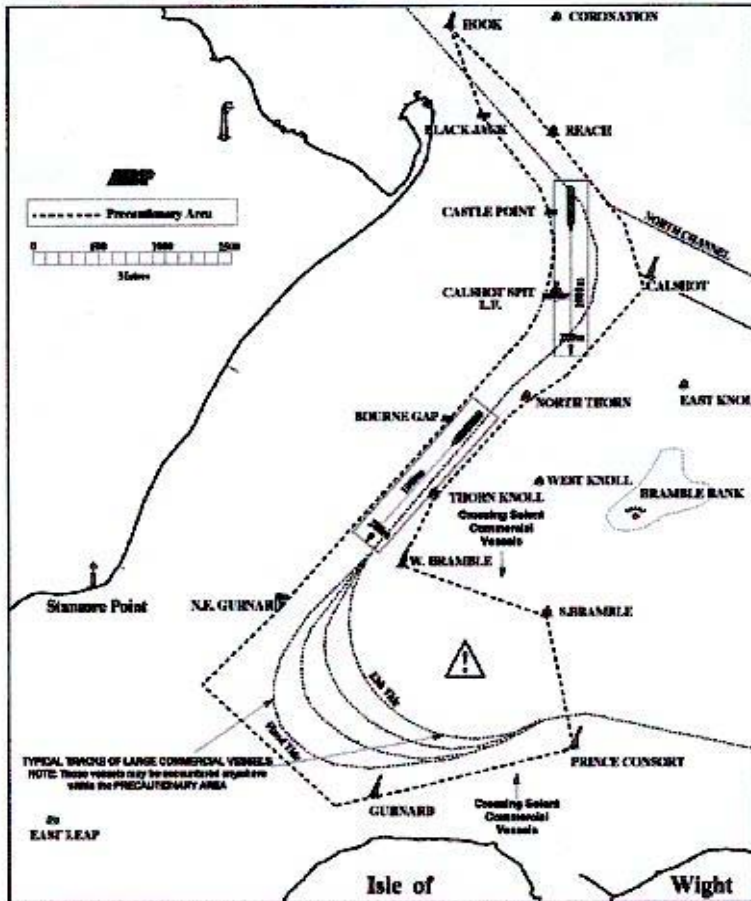
The Southampton Harbour Byelaws 2003 (No 11) enforces the requirement that all vessels over 150 metres in length when navigating within the Precautionary Area referred to in this notice are automatically allocated a Moving Prohibited Zone (MPZ). The MPZ is an area extending 1000 metres ahead and 100 metres either side of any vessel greater than 180 metres within the Precautionary Area.

The master of a small vessel (less than 20 metres in length or a sailing vessel) shall ensure that his vessel does not enter a Moving Prohibited Zone.

For the purpose of indicating the presence of the Moving Prohibited Zone the master of any vessel of over 150 metres length overall shall display on the vessel, where it can best be seen, by day: a black cylinder, and by night: 3 all round red lights in a vertical line.

When operationally possible the Southampton Harbour patrol launch (VHF Call Sign "SP" Channel 12) will precede these vessels within the 'Precautionary Area' showing, in addition to the normal steaming lights a blue fixed light. The absence of the patrol launch will not invalidate the implementation of the moving prohibited zone.

- 4 Southampton LNTM No 4 of 2001 is hereby cancelled.**



**Vessel Traffic Services Centre
Berth 37
Eastern Docks
Southampton SO14 3GG**

**Captain J S Chestnutt
Harbour Master**

21 August 2003

The following does not form part of the Sailing Instructions

Please be aware that Cowes is a busy Ferry Port with high speed ferries and new extra large car ferries as well as Ocean going Vessels. This applies to all of the Solent. Large vessels operate from the Needles Light throughout the Solent right round to St Catherine's Point.

There are two good books that you might like to read by Peter Bruce

Wight Hazards

Solent Hazards

These can be obtained at most chandlers in the Solent Area. They give excellent guidance for rounding the Needles and tell you how to avoid the wreck of the Varvassi a few meters off the Needles. Please read the QHM Notice to Mariners attached below as the books above will be out of date regarding this Notice. Watch the rocks after the Needles if you go in to beat the tide. There are a couple of ledges on the SW Coast to watch for. The water may be rough off the Needles and at St Catherine's Point with sometimes a big chop. You can go in a long way to the east of Ryde Sands but getting out is the problem. The Ryde Sands Post is inside the outer limit of the Sands.

Any problems we can help with call

Dave Hedgecox 07989690328 or Paul Walker 01983 293087

Is your Coast Guard form CG66 up to date? You can update it on the web at www.mcga.gov.uk



Sail the Wight



for the Earl Mountbatten Hospice

Reg charity no. 1039086

Saturday 14th June 2008

at East Cowes Sailing Club

start times from 07:00 am



A sponsored sail around the Isle of Wight, organised by East Cowes Sailing Club, in conjunction with the Westerly Owners Association. There will be different classes for Westerlys, Cruisers etc. with prizes for racing and the most sponsorship. There will be a race for small boats in the Solent



Bar, BBQ and Live Music after Sailing

For sailing instructions and entry e-mail

sailthewight@eastcowessc.co.uk

Or for more info phone: 01983 293087